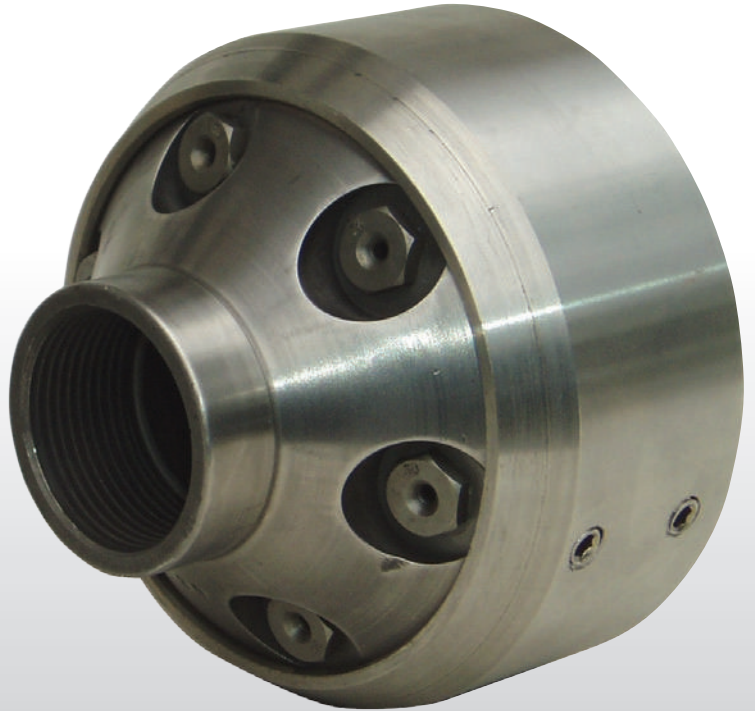




AquaTeq

**DRAIN**CHEM  
AUSTRALIA  
DRAIN MAINTENANCE PRODUCTS AND SOLUTIONS



**BL Missile** is developed to be used without a sled, and is the obvious complement to the Jaws Nozzle.

## BL MISSILE

The BL Missile features the patented system of conduits called Predator to improve the jetters' performance by 30-50%. Designed to replace the standard penetrator type nozzle commonly used. The BL Missile will improve pull and thrusting power and design to be used without a sled for smaller pipes and opening up blockages.

BL Missile is now the obvious complement to the Jaws nozzle. To open up any obstacles the BL Missile is supplied with one penetrating forward jet. To give maximum service lifetime the BL Missile is also supplied with a replaceable wear body.

### Characteristics

- Quality stainless steel construction.
- Variable jet sizes to accommodate flows from 100 up to 1000 l/min (25-265 US GPM).
- Looping the water around for a powerful water stream.
- Low angle jet streams, attack debris at its weakest point with superior performance.
- Construction made to help prevent nozzle from "getting stuck".
- Front jet
- Replaceable wear body

SOLE AUSTRALIAN DISTRIBUTOR

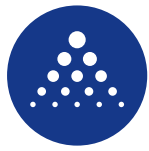
**Drainchem Pty. Ltd.**

Mail Address: P.O. Box 1814 Buderim QLD 4556

Phone: 1800 758 448 Mobile: 0409 850 577

Email: [info@drainchem.com.au](mailto:info@drainchem.com.au)

Web: [www.drainchem.com.au](http://www.drainchem.com.au)



# AquaTeq

# DRAIN CHEM

AUSTRALIA  
DRAIN MAINTENANCE PRODUCTS AND SOLUTIONS



Specifications	
Hose size	3/4" up to 1 1/4"
Water flow	100 – 1000 l/min (25-265 US GPM)
Pipe dimension	Ø 150 and up (6" and up)
No. of jets	6 + 1
Jet size	1,9 up to 6,0 mm
Weight without wear body	3,0 kg (6,6 Lbs.)
Weight with wear body	4,4 kg (9,7 Lbs.)
Length	130 mm (5,1")
Diameter without wear body	98 mm (3,9")
Diameter with wear body	120 mm (4,7")

*Note: Weights and dimensions are approximate and subject to change without notice.*

Art no.	Description
BLM01	BL Missile incl. 6 rear jets & 1 forward jet. Standard connection 1 1/4" BSP female thread. Adjustable to your needs.
BLM01WB	BL Missile incl. 6 rear jets, 1 forward jet & one (1) mounted wear body. Standard connection 1 1/4" BSP female thread. Adjustable to your needs.

In Conventional Nozzles water hits the front and then is forced out the rear. This results in undisciplined, weak and poorly defined water stream that quickly turns into mist very close to the nozzle.

All nozzles featuring the Predator conduit design will balance pump flow and pressure by looping it around a patented system of conduits. This results in a disciplined, well defined and powerful water stream that stays together longer and farther behind the nozzle.

The Predator series of nozzles include the Jaws, Hammerhead, Orca, C-Ray, Missile and the Golden nozzle. All of them developed for a certain purpose to offer you the best solution to your cleaning task.

A field trial setup to demonstrate the improved performance of the Predator series of nozzles best illustrate how you can reduce time on site, fuel and labour costs and dramatically reduce water consumption.

Test Conditions: 225mm x 80 metres in length filled with approx. 400 Kg of sand, gravel and stones.

Jaws vs. 3 different Conventional and common Nozzles:

Total water Consumed:	Time	No. of Passes
JAWS:		
7800 litre	30 mins.	2
Conventional Nozzles :		
16500 litre	60 mins.	4
21000 litre	120 mins.	10
51750 litre	345 mins.	23

SOLE AUSTRALIAN DISTRIBUTOR

## Drainchem Pty. Ltd.

Mail Address: P.O. Box 1814 Buderim QLD 4556

Phone: 1800 758 448 Mobile: 0409 850 577

Email: [info@drainchem.com.au](mailto:info@drainchem.com.au)

Web: [www.drainchem.com.au](http://www.drainchem.com.au)